

Te Hā-ā-Nuku

Ngāti Rangī Claims Committee Pānui

Whāia e au Manganui-o-te-ao kia tau au ki runga o Ruapehu ki Ngā Turi o Murimotu ki te rohe o Paerangi-i-te-Whare-Toka i puta mai ai a Rangituhia, Rangiteauria me Uenuku-Manawa-Wiri.

Whiringa-ā-Rangi 2005

Putanga 1



MIHI - INTRODUCTION

Tēnā koutou, tātau me ngā tini āhuatanga o te wā. Ānei rā hētehi pitopito kōrero hei whakamōhio atu ki a koutou i ngā nekeneke e pā ana ki ngā take whenua o roto o Ngāti Rangī, puta noa i a Whanganui nui tonu. Huri atu te pō, nau mai te ao!

E mihi ana hoki ki ngā whanaunga o Ngāti Tamakana mō te āhuatanga ki tō tātau whare kai hou a Te Hahau-o-te-rangi kei Mangamingi, e tū e kui i runga i ngā pākihi a tō tātau tupuna kuia a Uenuku-Manawa-Wiri.

Te Hā-ā-Nuku is the Ngāti Rangī Claims Committee (NRCC) Trust pānui that will assist with informing our people of what's happening regarding our claims.

Te Hā-ā-Nuku means the 'Breath of the Land' and links to the breath and voice of our whenua, awa and maunga tūpuna, Ruapehu. We hope you find the pānui informative, enjoy!

MAIMAI AROHA

The time has almost come to present the Ngāti Rangī case to the Waitangi Tribunal. Over 15 years key pahake and claimants have guided Ngāti Rangī. Some of our pahake influential in this process have passed on including: Joan Akapita, Mark Cribb, Taanewhaorangi Gray, Te Uta Murphy-Peehi, Te Peehi Waretini and Te Nape Wood. Also, claimants that have passed on are: Ritchie Akapita (WAI 151), Matiu Mareikura (WAI 257), Noel Akapita (WAI 467), and Pita Reo (WAI 569).

Moe mai rā koutou me te nuinga kua huri, arā hoki, ngā kuia a Pinenga rāua tahi ko Te Nape. E moe i te āiotanga o te Wāhi Ngaro, okioki rā. Kāti mo aitua. Tihei mouri ora!

TE HAHAU-O-TE-RANGI

At dawn on Saturday 12 November 2005, the new Whare Kai at Mangamingi Marae was opened. NRCC would like to take the opportunity to congratulate our Ngāti Tamakana whānau and join the whānau in celebrating a special event in our tribal history. In recognition of this occasion, our top photo was taken on Fri 11 Nov from Mangamingi.

WHAT'S BEEN HAPPENING?

The Ngāti Rangī Claims Committee has been preparing for and anticipates starting hearings in February 2006.

Our tribal area is separated into two Hearing Districts: Tongariro National Park (TNP) District & Whanganui District (one block is also in the Taihape District but we don't know when that will start). The issues related to each district will be covered during separate hearing times. However it is our request that our Iwi Narrative (traditional kōrero) will only be given once at a combined Hearing of the TNP & Whanganui rohe in February 2006.

CLAIMS COMMITTEE

The NRCC Trust have representatives from each of the six Ngāti Rangī iwi claims, kaumātua, Ngāti Rangī Trust (NgRT) reps, non-voting staff and legal counsel. Members are:

Bobby Gray	Chair, WAI 467
Toni Waho	Secretary, WAI 1250
Thomas Mareikura	Treasurer, WAI 277
Mark Gray	Kaumātua, WAI 151
Richard Pirere	Member, WAI 556
Sarah Reo	Member, WAI 569
Raana Mareikura	Kaumātua, Voting
Don Robinson	NgRT Rep, Voting

J Wendy Epiha	<i>Claims Mgr</i>
Che Wilson	<i>Communications Mgr</i>
Liana Poutū	<i>Legal Counsel</i>
Tajim Mohamed	<i>Legal Counsel</i>
Loretta Lovell	<i>Legal Counsel</i>

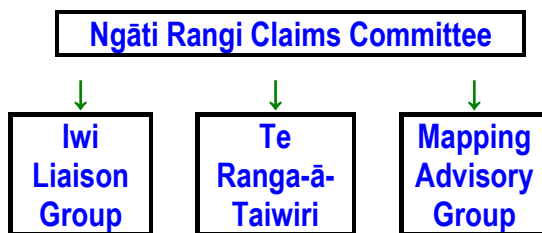
The Claims Committee meets once a month and also when the work load is busy. The other claimants who don't attend the regular claims meetings but are kept updated on issues are:

Lou Brider	WAI 277
Hune Rapana	WAI 556
Colin Richards	WAI 556

NRCC SUB-COMMITTEES

There are three sub-committees: The Iwi Liaison Group (ILG), Te Ranga-ā-Taiwiri, and the Mapping Advisory Group.

Diagram of NRCC Trust



IWI LIAISON GROUP - ILG

The Iwi Liaison Group (ILG) is a Sub-Committee of the NRCC. It was established in Dec 2004 for marae representatives to be updated on Claims activity and to contribute with advice and kōrero from the marae. The ILG meets on the third Saturday of each month.

The 14 marae in the Ngāti Rangi rohe have been invited to participate in the ILG. The ILG definition for marae is: active marae/marae kainga or inactive marae/marae kainga with active committees.

The Marae that have representation on the ILG are: Raketapauma, Tiorangi, Tirohia, Ngā Mōkai, Maungārongo, Tuhi Ariki and Marangai. Other marae that have indicated interest and are yet to attend the ILG meetings are:

Kuratahi, Tūrangārere (Ōpaea), Mangamingi, Te Puke and Mo-te-Katoa. There are two marae we have not yet heard from.

In September maps of the Tongariro National Park Inquiry District were distributed to ILG representatives or sent out to marae secretaries. Three A3 Maps are intended for display in Whare Kai and a map booklet for marae perusal.

Marae will also be sent CDs with copies of all reports commissioned by both CFRT and the Waitangi Tribunal. To view hard copies of the reports, please visit the Ngāti Rangi Claims Office on Mon, Wed, Fri 10am – 2pm.

TE RANGA-Ā-TAIWIRI

Te Ranga-ā-Taiwiri is the NRCC Research Sub-Committee that was established in Nov 2004. The role of Te Ranga-ā-Taiwiri is to conduct iwi research based on traditional kōrero and Māori Land Court records. Te Ranga-ā-Taiwiri members are allocated key areas of research, they are:

Toni Waho	Co-ordinator
Che Wilson	Rangituhia
Mākere Edwards	Rangiteauria
Tūrama Hawira	Uenuku-Manawa-Wiri
Esther Tinirau	Ngāti Rangi ki te Awa
Hinurewa Poutū	Manuscript Translator

MAPPING ADVISORY GROUP

Part of the Claims work is developing maps for our Hearings and as iwi resources for the future (like the maps that were sent out to marae in Sept). The Mapping Advisory Group has been recently established and will work directly with Mapping Contractors from CFRT to develop maps appropriate for our needs. The members are:

Richard Pirere	NRCC Trustee
Colin Richards	Claimant
Keith Wood	Member
Che Wilson	Member

The Mapping Advisory Group is expected to meet only a few times prior to the hearings beginning.



Pic 2: Maunga Ruapehu from Rotokawa

OUR KEY ISSUES

For each Tribunal District the greater Whanganui claimants have a collective Whanganui wide statement of claim (referred to as a Generic Claim) and each grouping has their own specific statement of claim, in our case, referred to as our Specific Claim.

You'll also note that though we have 6 claims, we have only submitted one Statement of Claim (SOC) for each District. The SOC's cover all the issues identified in our original 6 claims as they relate to the two districts.

You can go through Full Statements of Claim by contacting your Marae ILG reps, going to our office or checking out our website.

Before outlining our specific Claim issues for the two districts, below is an outline of the general issues that we are claiming as a Whanganui collective.

OUR KEY GENERIC ISSUES – TONGARIRO NATIONAL PARK (TNP)

The key generic issues that we as a collective Whanganui Claimant grouping have claimed in the TNP district are:

- Native Land Court
 - Tenure Reform and Alienation of Land
 - Native Land Court Process
 - The Rohe Pōtae
 - Whanganui Lands Trust
- Creation of the Tongariro National Park
 - National Park Policy
 - Crown Acquisition of Park Lands
 - Tongariro Park Act 1894
 - Extension to the TNP

- Tongariro National Park Management
 - Failure to acknowledge or recognize Whanganui Iwi Interests
 - Exclusion of Whanganui
 - Failure to Protect the Cultural and Environmental Integrity
- Twentieth Century Alienations
 - Public Works Acquisitions
 - Crown's Imposition of Rating
 - Infrastructure
- Tongariro Power Development

OUR KEY SPECIFIC ISSUES – TONGARIRO NATIONAL PARK

The key issues covered in our Specific TNP District Claim may seem similar but also have particular references for Ngāti Rangi, they are as follows:

- Crown Acquisition of Land
- Creation of Tongariro National Park
- Management of the Tongariro National Park
- Establishment of the Tongariro Power Development
- Failure to recognise Ngāti Rangi Rangatiratanga
- Failure to actively protect Ngāti Rangi Land Base and Other Resources

OUR KEY GENERIC ISSUES – WHANGANUI

The key generic issues that we as a collective Whanganui Claimant grouping have claimed in the Whanganui district are:

- Pre 1865 Land Dealings
 - NZ Company Land Dealings
 - Land Claims Commission
 - 1848 Whanganui Deed
 - Crown Purchases Between 1848 & 1865
- NZ Company Transaction Reserves
- Military Engagement
 - Heretaunga Dispute
 - Whanganui Siege
- Protection of Land Base



Pic 3: Whānau walking past Rotokawa with Karioi in the distance.

OUR KEY GENERIC ISSUES – WHANGANUI – Cont.

- Native Land Court Policy and Practice
 - Individualisation of Title
 - Costs of the Land Court Process
 - Prejudicial Processes
- Māori Self Governance
 - Whanganui Rūnanga
 - Whanganui Lands Trust
 - The Rohe Pōtae
- Main Trunk Railway
- Crown Purchasing post 1865
- Public Works
 - Compulsory Acquisition, Compensation & Consultation
 - Lands Surplus to Requirements
- Native Townships
- Vested Lands
 - Establishment of Vested Lands to Detriment of Māori
 - Detrimental Terms on Leases of the Vested Lands
 - Valuation Improvements
 - 1951 Commission of Inquiry
 - 1954 Settlement
 - Māori Trustee
- Māori Land Development & Administration
 - 19th Century Crown Policy & Practice
 - Whanganui Māori Request for Land Development Assistance – 1880-1900
 - 20th Century Land Development & Administration Initiatives
 - Capital and Training Assistance
- Rating

- Scenic Reserves
 - Compulsory Acquisition
 - Consultation
 - Māori Protest
 - Compensation
 - Management & Control
 - Est'ment of Whanganui National Park
 - National Parks Act 1980
 - Representation
- Local Government
- Environmental Policy & Practice
 - Crown Management & Control of the Environment
- Rivers, Streams and other Freshwater Resources
 - Loss of Ownership & Tino Rangatiratanga
 - Fisheries
 - Tongariro Power Development
 - Pollution of Water Resources
- Foreshore & Seabed
- Socio-Economic Issues
 - Te Reo Māori
 - Tikanga Māori
 - Cultural Taonga
 - Māori & Tribal Leadership Structures
 - Whanganui Māori Population
 - Employment Opportunities
 - Health Services
 - Education Opportunities
 - Native Land Court Hearings
 - Economic Development & Sustainability
 - Food Sources
 - Housing

OUR KEY SPECIFIC ISSUES – WHANGANUI

The key issues covered in our Specific Whanganui District Claim are again similar but also have specific issues relating to Ngāti Rangī, they are as follows:

- Pre 1865 Land Dealings
- NZ Company Transaction Reserve
- Military Engagement
- Protection of Land Base



Pic 4: Mangawhero River, Mt Road, Ohakune

OUR KEY SPECIFIC ISSUES – WHANGANUI – Cont.

- Native Land Court Policy and Practice
- Māori Self Governance
- Main Trunk Railway
- Crown Purchasing post 1865
 - Mere Kuaō Lands
- Public Works
 - Pauro Marino Lands
- Native Townships
- Vested Lands
 - Morikaunui and Ātihau Whanganui Incs
- Māori Land Development and Administration
- Rating Issues
- Scenic Reserves
- Local Government
- Environmental Policy and Practice
- Rivers, Streams and Fresh Water Resources
- Foreshore and Seabed
- Forestry Issues
- Socio-economic Issues

HEARINGS TIMETABLE

As noted above, we have two major Tribunal Districts and the key dates are as follows:

Combined Hearing (TNP and Whanganui)

Feb 06

The date for our week of Iwi Narrative Hearings is yet to be set though it is expected to be in February. This Hearing will be lead by our pahake.

TNP Hearings

Feb – July 06

It is expected that there will be approximately 5 weeks of Hearing to follow the Ngāti Rangi Iwi

Narrative Hearing. This will include all claimants in the Tongariro National Park District.

Whanganui Hearings

Oct 06 – 2007

The timetabling for this Hearing District is yet to be confirmed though it is expected that hearings will commence in October 06 and run into 2007.

Taihape Hearings

We have one block in this district and the hearings are scheduled for 2008.

IWI EVIDENCE

In February the Iwi Narrative kōrero to be presented to the Tribunal Hearing at Raketapauma will consist of Whare Wānanga kōrero and accompanying waiata, haka and ngeri only. In accordance with Whare Wānanga teachings this evidence will not include written submissions.

Iwi Evidence collated over the years and also further interviews conducted in November 05 will assist with our Hearings that continue after of Iwi Narrative Evidence Hearing in February 06 for TNP and in Oct 06 for Whanganui. This kōrero will be submitted in writing, orally and will also be supported by waiata, haka and ngeri.

Interviews will be conducted in November by our Legal Counsel, Te Ranga-ā-Taiwiri members and other iwi members. These interviews will cover issues related to both the TNP and Whanganui Hearings.

CLAIMS OFFICE

Ngāti Rangi Claims Committee now has an Office. It is based at Taanenui Building, Maungārongo Marae, Ohākune. A small blessing by our pahake was conducted on Friday 11 November with the Te Kura Kaupapa o Ngāti Rangi.

The Kura Kaupapa shares the office with NRCC and uses it as their English Class Room

every Thursday. Consequently, the office is not in use on that day.

Meetings will be held at the Office and if you wish to view any of the documentation or just want to come in and have a kōrero, the office is open between **10am – 2pm** on **Monday, Wednesday** and **Friday**.

Contact details for the office are: **06 3859049**

WEBSITE

The Ngāti Rangi Claims Website is currently being developed and is expected to be launched at the Ngāti Rangi Claims Hui-ā-Iwi and Christmas Dinner to be held at Maungārongo Marae on **Wednesday 14 December 2005**.

HUI-Ā-IWI

We will be having a number of Hui-ā-Iwi in preparation for Hearings:

Wed 14 Dec	Iwi Dinner	Maungārongo
Mon 23 Jan	Hui-ā-Iwi	Maungārongo
18-19 Feb	Hui-ā-Iwi	Raketapauma

PĀNUI

If at any time you have pānui that you wish to share with the iwi, please feel free to let the editor of Te Hā-ā-Nuku know: che@intugen.com

25-27 Nov	Wānanga	Maungārongo
17 Dec	ILG	Office

CONTACT

For information, contact either: Wendy Epiha-Arahanga (Claims Manager), your ILG Marae Representative, an NRCC Committee member or the Office Manager, Lila Pakinga at the NRCC Office.

For pānui or Communication issues contact the Ngāti Rangi Claims Communication Manager and editor of Te Hā-ā-Nuku, Che Wilson on che@intugen.com or **021 765681**.

Heoti anō

Nā te Kōmiti a NRCC

Contact NRCC Office
06 3859049

HOW DO THE CLAIMS WORK?

The following is an overview on how claims are progressed:

Basic Claims Flow Chart



*We are currently at the stages highlighted with **.*

In the case of the Ngāti Rangi Claims, we lodged our first claim in 1990 (WAI 151) and we are expected to go to hearing in February 2006. This has taken 16 years.

Front Page Ref: Pic 1: Mt Ruapehu, Ohākune Road, Mangamingi Marae.