

22 November 2009

Maungarongo Marae

# Purpose

To assist in progressing discussions/communication in regards to the Nga Iwi o Whanganui Land Claims within the Wai 903 Whanganui Inquiry District.

# Objectives

1. Assist in identifying a framework for the Iwi to progress to Negotiations.
2. Assist in identifying key issues
3. Assist in developing and supporting relationships

# Working Party Key Tasks

## 1. Develop a Terms of Reference

- Identify key objectives
- Roles & Responsibilities
- Membership, etc...

## 2. Develop Key Work Streams

- Vision (Philosophy Statement)
- Communication Strategy
- Where to from here - Collation of Information to present to Iwi
- Develop key recommendations to go forward

## Task 1

# Our Vision

“Toitu te Mana”

“Toitu te Whenua”

“Toitu te Kupu”

# The Guiding Principles

Wairuatanga	To encourage, maintain and promote spiritual identity and connection with our taonga, the spiritual existence, intertwined with the physical. It is expressed through the intimate connection of our people with the Maunga, Awa, Moana, Tupuna and Atua
Whakapapa	The definition of our Whanganui Iwi, Hapu and who we are – this is the bridge that links us to our land and Tupuna.
Whanaungatanga	The understanding of relationships of Whanganui Iwi/hapu, that includes rights and responsibilities consistent with being part of a collective. It is the principle which binds our Whanganui Iwi/hapu, and affirms the value of collectiveness.

# The Guiding Principles cont'd

Kotahitanga	The principle of unity, of moving together as Whanganui Iwi with purpose and vision to advance our land claims for the mutual benefit for Whanganui Iwi/hapu, and celebrating our Whanganui Iwi diversity
Rangatiratanga	To advance and promote Whanganui Iwi self determination, an expression of the characteristics of people who show humility, leadership by example, generosity, diplomacy and knowledge throughout the land negotiations to benefit our Iwi and Hapu.
Manawhenua	The principle that connects Whanganui Iwi/Hapu to our land, reaffirming this by the right of whakapapa. It defines our turangawaewae and ukaipo, these places where we belong.

# The Guiding Principles cont'd

Manaakitanga	The principle of behaviour and attitude that encourages the upholding of our Whanganui Iwi tikanga, that acknowledges the mana of others, as expressed through sharing resources, ideas, expertise and having trust and respect for each other throughout the land negotiations.
Te Reo	Our language that embodies, encompasses, expresses and defines our kawa, tikanga, values and beliefs of our Whanganui Iwi world-view.
Kaitiakitanga	To provide a clean, safe and healthy environment by promoting the protection and restoration of our whole environment as Whanganui Iwi/Hapu.
Whakarauhiinga	To ensure that all within Whanganui Iwi are open, accountable and transparent to each others Iwi/hapu as well as having excellent communication mechanisms that continually inform and update Whanganui Iwi/hapu during the land claims negotiations.

## Task 2

# Our Mission

To provide information to assist Iwi to make informed decisions to progress towards Negotiations for the Iwi collective Land Settlement.

## Task 3

# Communications Strategy

- To ensure that the right messages are being communicated efficiently and effectively.
- To ensure that cost effective streams and strategies are used to disseminate information



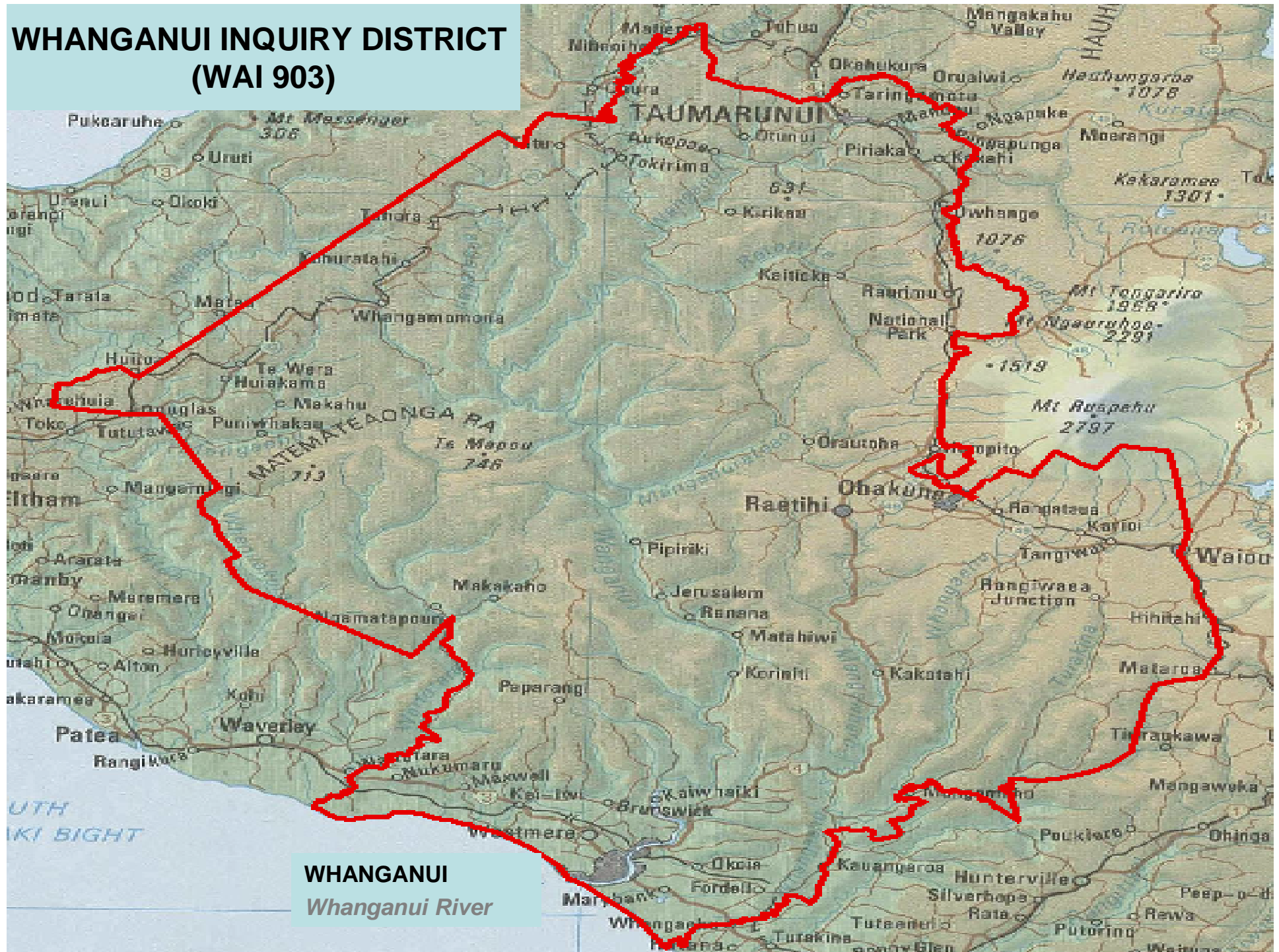
## Task 3

# Overview

To provide information to assist Iwi to make informed decisions to progress towards Negotiations for the Iwi collective Land Settlement.

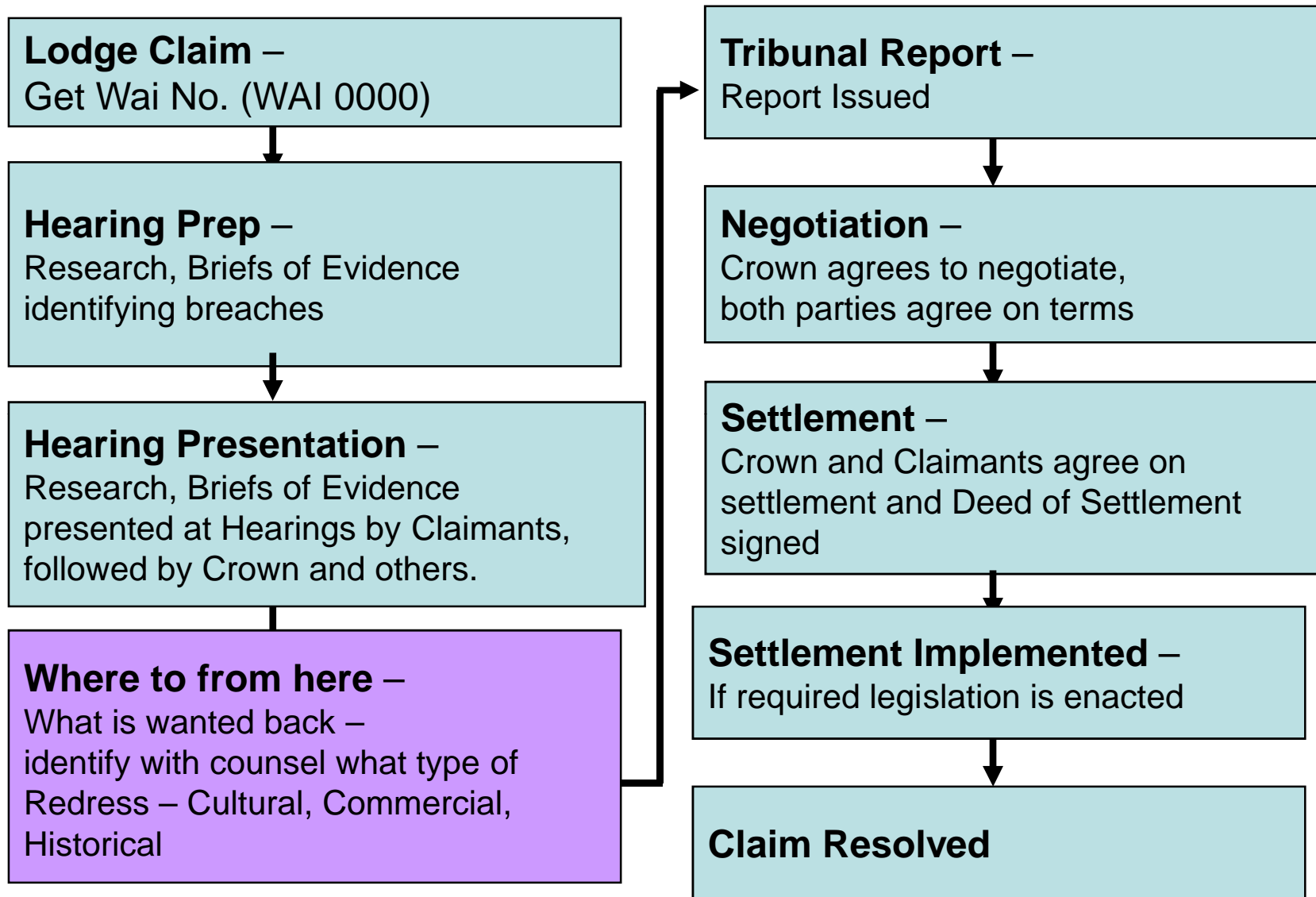
- Historical Overview
- Current Situation
- Future Direction

# WHANGANUI INQUIRY DISTRICT (WAI 903)

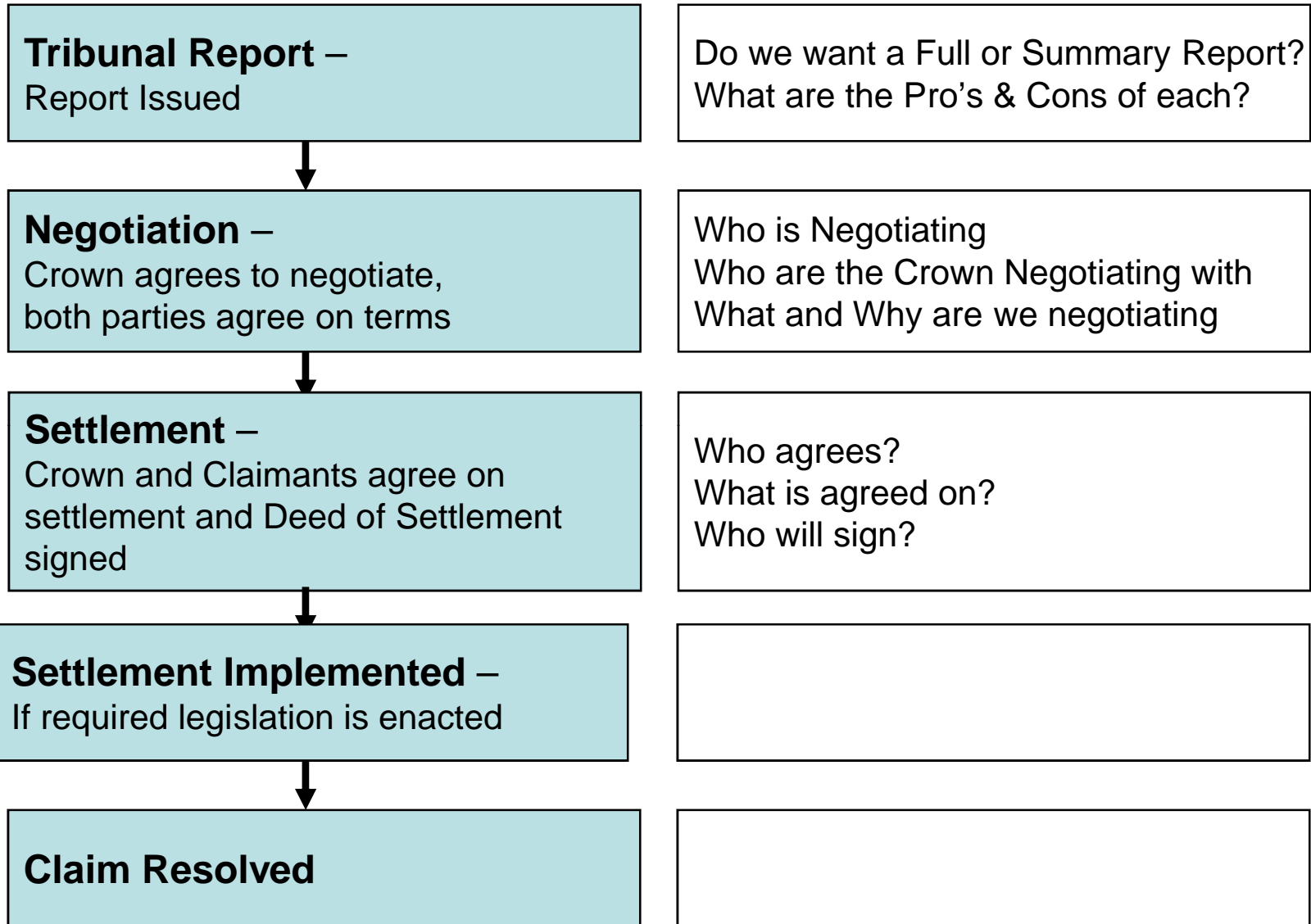


**WHANGANUI**  
*Whanganui River*

# Overview of Hearing Process



# Where to from here?



# Fact Sheet Info

## Who is Whanganui?

- Who are the groups who will participate in the Whanganui Negotiations?
- How will the Iwi/Hapu groups structure themselves to be part of the Whanganui Negotiations
- How will the Whanganui Wide Negotiations be structured?
- How will the Iwi/Hapu achieve an Agreement to work together?
- How will the Iwi/Hapu groups achieve a Deed of Mandate?
- How will the negotiations be conducted and agreed to, between Iwi/Hapu to negotiate a settlement with the Crown?
- Will the Awa Tupua Settlement impact and affect the Land Claim Settlement? (*need assurance by the Crown*)

# Fact Sheet Info

## **What could the settlement for Whanganui cover?**

- An agreed account of the historical background to the Whanganui Iwi/Hapu Treaty of Waitangi claims
- Acknowledgements of Crown breaches of the Treaty of Waitangi
- Crown apology for those breaches
- Cultural redress
- Commercial and financial redress

# Fact Sheet Info

## **What is Cultural Redress?**

- Cultural redress is offered in recognition of the traditional, historical, cultural and spiritual association of the Whanganui Iwi/Hapu, with places and sites owned by the Crown. No private land is involved.

## **What has been offered to Whanganui to date?**

- Whanganui Court House
- Part Lismore Forest (Proposed only)
- Part Kaitoke Prison (Proposed only)

# Fact Sheet Info

## What is financial and commercial redress?

- *Financial and Commercial Redress* is offered to redress the economic loss
- Suffered by the Hapu/Iwi as a result of acknowledged breaches.
- Purchase of licensed Crown forest land, using the accumulated rentals they are entitled to from the licensed lands purchased with their quantum.

# Future Direction

- Agree to seek a settlement.
- Identify if Iwi would like a Full or Summary Report, or both.
- Develop a central Working Group to develop a model for land negotiations.
- Develop and support a Post Settlement Governance Entity Working Group to work alongside the central working group.
- Develop an Iwi **Aspiration List**
- Develop an Iwi Communication Strategy

# Recommendations

- 1. Iwi appoint a centralised working group to commence setting up a Negotiation Team and terms of reference for Negotiations**
  - Yes/No, we want a centralised working group
  - We support the following people for the centralised working group
  - Provide suggestions on terms of reference
- 2. Iwi approve and support a Post Settlement Governance Entity working party being established**
- 3. Set a Decision Making Hui-a-Iwi Date**

