



Te Tōtarahoe o Paerangi
Ngāti Rangi Trust
Inaugural Annual Report

1 April 2007 – 31 March 2009

Ngāti Rangi Annual Report 2009

For Te Kāhui o Paerangi (iwi rūnanga) and Te Tōtarahoe o Paerangi (Ngāti Rangi Trust)



Logo: Ngāti Rangi logo designed by Mindy-Lou Pakinga

Ngāti Rangi Annual Report 2009

For Te Kāhui o Paerangi (iwi rūnanga) and Te Tōtarahoe o Paerangi (Ngāti Rangi Trust)

Contents Page

Mihi – Introduction	1
Chair’s Report	2
Ngati Rangi Claims Hearings – photographs	3
Manager’s Report	4 – 5
Ngati Rangi Working Party	6
Te Kahui o Paerangi – Ngati Rangi Runanga	7
Te Tatarahoe o Paerangi – Ngati Rangi Trust	8
Kaitiakitanga in Practice	9
2009 Annual Financial Statement	10 – 15

Ngāti Rangī Annual Report 2009

For Te Kāhui o Paerangi (iwi rūnanga) and Te Tōtarahoe o Paerangi (Ngāti Rangī Trust)

Mihi – Introduction

Pokipokia te pō! Popoia te pō! Pō, pō, ka ao, ka ao, ka awatea! Tihei mouri ora!

Kua tahia te kotahi tau mai te whakarewanga o Te Kāhui o Paerangi me Te Tōtarahoe o Paerangi i tō tātau marae a Mangamingi. Inā, te hunga kua riro atu ki tua o pae maumahara, huri atu te pō, nau mai te ao!

Tēnei ra te Rīpoata ā-Tau mātahi mo Ngāti Rangī te whakamōhio atu i ngā tini āhuatanga kua pā mai kia Ngāti Rangī, me kī, kua oti hoki e mātau hā koutou ringaringa waewae o te iwi hēnei tū mahi kia tū tangata ai tātau.

Nō reira, tēnei te tuku atu i tēnei rīpoata mātahi kia rere hei mātakitaki mā te nui o Ngāti Rangī i runga i te ngākau iti.

This is the first written annual report ever compiled for Ngāti Rangī and indeed a milestone in our history following the launch of our new tribal structure in September 2008 at Mangamingi Pā. With iwi support, at the Mangamingi hui, we launched the new iwi rūnanga – Te Kāhui o Paerangi and its legal entity, Te Tōtarahoe o Ngāti Rangī (Ngāti Rangī Trust).

This inaugural report actually covers work since the commencement of our governance review in April 2007 and has four key areas:

- Chairs Report: Strategically looking to the future as a part of governance
- Managers Report: Reviewing performance
- Governance: Overview of tribal structure and improvements required
- Financials: Summary of accounts and representative attendance and payments

The report discloses our activities and initiates a new era and culture of formal reporting for future management and governance of the Ngāti Rangī estate. We note that the financial report is not a qualified audit as it was agreed internally that only every second year will be qualified to save costs unless required by the iwi or for funding purposes.

Nā mātau iti

Te Tōtarahoe o Paerangi

Ngāti Rangī Trust

Ngāti Rangi Annual Report 2009

For Te Kāhui o Paerangi (iwi rūnanga) and Te Tōtarahoe o Paerangi (Ngāti Rangi Trust)

Chairs Report

Tēnā koutou, tātau.

The past year coupled with the work delegated to the Ngāti Rangi Trust Working Party from April 2007 to September 2008 has been a huge learning curve. Added to this learning is the necessity of uri helping develop ideas, growing our opportunities and getting involved with iwi kauapapa.

Looking to the future the three key areas of work for both Te Tōtarahoe o Paerangi and Te Kāhui o Paerangi are:

- Implementing Te Ara ki te Moungaroa – Ngāti Rangi Strategic Plan
- Progressing Ngāti Rangi to direct Treaty of Waitangi negotiations and settlement
- Assisting our marae with governance support and training

Te Ara ki te Moungaroa is our first completed strategic plan which lays out a simple and exciting pathway for Ngāti Rangi to take deliberate steps to grow our opportunities and advance our marae, uri and iwi for the future. The key step to the success of this plan is gaining momentum and continued support so we are working together for the betterment of Ngāti Rangi rather than thinking about what the iwi is going to give. It is a reciprocal relationship between uri and iwi, iwi and uri.

Progressing Ngāti Rangi to direct negotiations was covered at three hui (two in March and one in May) and in July 2009 at Ngā Mōkai, Ngāti Rangi at its fourth hui-ā-iwi agreed unanimously to enter into discussions with the Office of Treaty Settlement. We have been charged with establishing a sub-committee of claimants and Te Kāhui members to prepare ourselves with the hope of entering formally into negotiations in the 2010-11 financial year.

For Ngāti Rangi iwi to prosper, our uri and marae must be supported to ensure that we maintain and share Ngāti Rangi knowledge accordingly while identifying Ngāti Rangi opportunities to advance us as a people. Essential to this mix is assisting our marae to develop its governance and management as well as the physical structures. Also, helping whānau to revive old marae or establish new marae would ensure that Ngāti Rangi walks into the future positively.

I would like to take this opportunity to thank those that have helped Ngāti Rangi get to where we are today: our pahake for your conditional support; uri sponsoring organisations; our Resource Management Officer, Keith Wood; the individuals that contribute to our account and past Trustees. Finally to our staff, Te Kāhui and Te Tōtarahoe members that give of their time to help grow the aspiration, that Ngāti Rangi exist in 1,000 years time.

E mihi kau ake ana

Che Wilson

Chair – Te Kāhui o Paerangi and Te Tōtarahoe o Paerangi (Ngāti Rangi Trust)

Ngāti Rangi Annual Report 2009

For Te Kāhui o Paerangi (iwi rūnanga) and Te Tōtarahoe o Paerangi (Ngāti Rangi Trust)

Ngāti Rangi Claims Hearings

Raketapauma Marae, Feb 2006 – Tongariro National Park Inquiry District Hearings



Ngāti Rangi Annual Report 2009

For Te Kāhui o Paerangi (iwi rūnanga) and Te Tōtarahoe o Paerangi (Ngāti Rangi Trust)

Managers Report

Kia ora mai tātau.

The past year has certainly seen the trust grow in strength and capacity to serve as was intended, a vehicle to promote Ngāti Rangi development and well being into the future.

April 2007 – September 2008

In April 2007 a hui-ā-iwi at Maungārongo supported a review of the Ngāti Rangi Trust which resulted in Kemp Dryden, Geoffrey Hīpango, Deborah Te Riaki and Che Wilson being given full delegated responsibilities of the Trustees to review the Trust and recommend a restructure, known as the Ngāti Rangi Trust Working Party.

The initial work of the Working Party meant consolidation and working closely with our Resource Management Officer, Keith Wood who has maintained a consistent face for Ngāti Rangi for almost two decades. This resulted in Ngāti Rangi forging a new relationship with our regional council, Horizons MW resulting in a one year contract to fund a cadet, Hīkoi Te Riaki, to work for both ourselves and the regional council. Hīkoi was able to learn a great deal as well as seal relationships for Ngāti Rangi.

This relationship helped build a positive relationship with the local mill WPI and improve our relationship with ski field operator Ruapehu Alpine Lifts. We were also able to continue the work of the late Colin Richards and other pahake by gaining funding from Horizons MW for pest control at Rotokura and funding from Ngā Whenua Rāhui for wānanga. We also held our first strategic planning session in November 2007 and progressed our relationship with Geological Nuclear Science (Institute that monitors volcanic activity in the rohe) where each marae has been given a mounted photograph of Te Wai-ā-moe.

Our Past Year

Iwi Registrations Officer

To assist identify and keep in contact with uri the trust is developing a tribal registration database.

In February 2009 the trust employed Māreikura Kaire as our Database Officer to update the iwi registration form, operate the new database programme software and maintain the website. Māreikura also supports the office administration.

Mouri Tū Mouri Ora

The trust received funding from Te Puni Kōkiri to support Āneta Rāwiri produce a book called 'Mouri Tū Mouri Ora - Ngāti Rangi, the Tongariro Power Scheme, and the Resource Management Act 1991, Reconciling indigenous spiritual wellbeing, corporate profit and the National interest'.

Āneta's role was to collate records of our pahake kōrero in regard to our cultural relationship with our tūpuna awa and the impact on these waterways from commercial exploitation.

The contributors to the book were:

The late Colin Richards

The late Matiu Māreikura

The late Te Nape (Nancy) Wood

Turuhia (Jim) Edmonds

Ida (Morna) Taute

Keith Wood

Āneta Hinemihi Rāwiri

Dr Shane Wright

Molly Melhuish

Mihi – Tūrama Hāwira

Foreword – Gerrard Albert

Ngāti Rangi Annual Report 2009

For Te Kāhui o Paerangi (iwi rūnanga) and Te Tōtarahoe o Paerangi (Ngāti Rangi Trust)

The book was distributed free of charge to our Ngāti Rangi organisations, national and local libraries, the whanau of the book contributors and our iwi.

Genesis

In August 2008 a Ngāti Rangi Hui-ā-iwi agreed to engage with Genesis with a view to developing a separate relationship from Whanganui with Genesis, without prejudice to the claims. Ngāti Rangi would develop the relationship appropriately in regard to the eastern diversion of the Tongariro Power Scheme. The western diversion often overshadows the eastern diversion at times, and Ngāti Rangi considers having a distinct forum to discuss issues will keep a focus on our interests.

Ngāti Rangi propose that Genesis fund environmental and research projects; this proposal is not viewed by Ngāti Rangi as a 'sellout' but rather an 'iwi fine' for the detrimental impact from Genesis's commercial activities on our tribal waterways.

Claims

In March 2009 the final tangata whenua submission hearings were convened for the Whanganui Inquiry District at Maungārongo Marae. This hearing week marked the completion of the Ngāti Rangi claims journey of near 30 years of research, with limited resources and sheer dedication from successive generations of uri to tell our tangata whenua stories of grievance and loss.

Ngāti Rangi was commended by the tribunal for a positive and successful presentation of our claims evidence and for coming together united for the hearings. The next stage of the tribunal process is to have the closing submissions, crown evidence and then for the tribunal to make its report on the hearings. On behalf of Ngāti Rangi, Te Kāhui o Paerangi will continue to prepare for settlement while awaiting the tribunal report; by strengthening relationships, building capacity and planning for the future.

Meridian

The trust has a relationship with Meridian Energy in regard to their Wind energy project south of Waiouru. From the relationship Trust representatives were able to obtain support this year for 4 Ngāti Rangi Marae, one from each tupuna awa cluster, with reports for our other Marae to be completed over the next few years, if not sooner. Marae Energy Audits completed to date are: Raketapauma (Hautapu), Ngā Mōkai (Whangaehu), Maungārongo (Mangawhero), Te Puke (Te Waimarino).

Strategic Plan

A key objective of the trust in our first year of reorganisation was to complete a 5 year Strategic Plan so 'we walk together' with a 'focus on the future'.

Te Puni Kōkiri funded the trust to contract a suitably qualified consultant to facilitate the development of the Strategic Plan. Mike Noho of Mata Concepts was appointed as our planning facilitator.

Deborah Te Riaki

Project Manager, Ngāti Rangi Trust

Ngāti Rangi Annual Report 2009

For Te Kāhui o Paerangi (iwi rūnanga) and Te Tōtarahoe o Paerangi (Ngāti Rangi Trust)

Ngāti Rangi Working Party Achievements

Hīkoi Te Riaki, Ngāti Rangi-Horizons MW cadet, at work learning the ropes and involving another Ngāti Rangi uri, Hēmi Gray.



Hīkoi Te Riaki – Electro fishing



Hemi Gray – Resting after water monitoring

Opening of new chairlift, Tūroa Skifields, Mount Ruapehu



The late Rangitihī Tahupārae and the former NZ Prime Minister Helen Clarke

Te Kāhui o Paerangi – Ngāti Rangi Rūnanga

The Ngāt Rangi tribal structure was mandated in September 2008 with marae and pahake representatives nominated to Te Kāhui o Paerangi. This move was deliberately made to ensure that Ngāti Rangi is prepared prior to settlement and any changes that are required for settlement are only minor.

The name Te Kāhui o Paerangi was selected to acknowledge our eponymous ancestor and progenitor of Ngāti Rangi, Paerangi and the term kāhui is a reference to te kāhui maunga.

Only participating marae are identified in the diagram below and the marae with (*) are marked as they support Te Kāhui o Paerangi but don't have the capacity at this stage to provide a representative. Our structure is as follows:



For this structure to be effective we require active participation by all marae. This structure feeds into the Ngāti Rangi legal entity, Te Tōtarahoe o Paerangi (Ngāti Rangi Trust). The Tōtarahoe meets monthly and holds the legal and financial responsibility on behalf of the iwi though it must report back to Te Kāhui o Paerangi, our rūnanga.

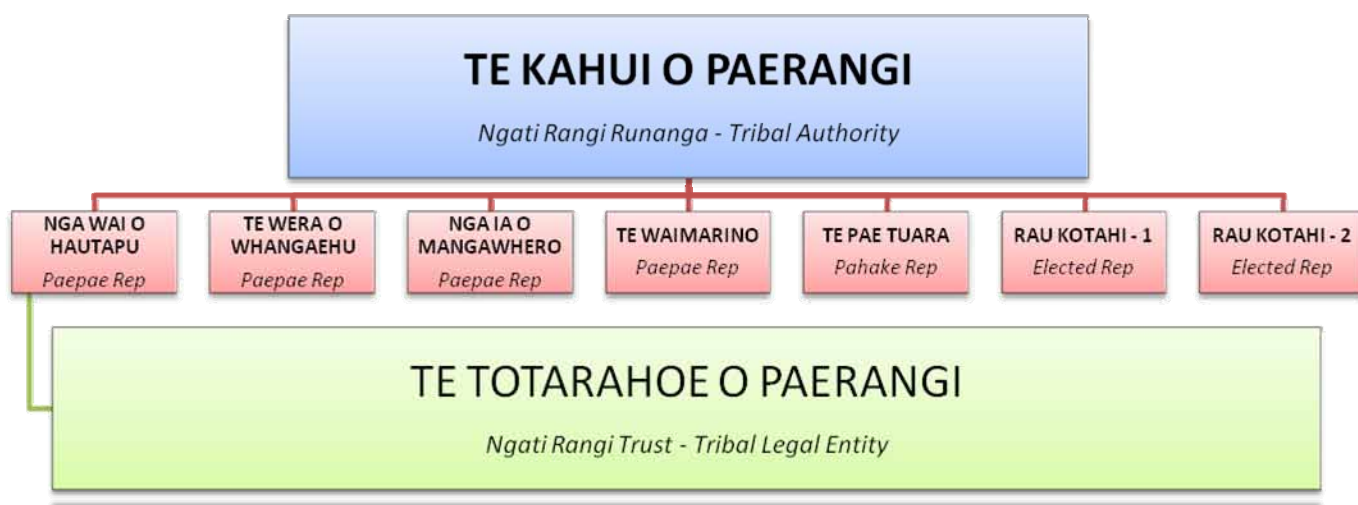
Ngāti Rangi Annual Report 2009

For Te Kāhui o Paerangi (iwi rūnanga) and Te Tōtarahoe o Paerangi (Ngāti Rangi Trust)

Te Tōtarahoe o Paerangi – Ngāti Rangi Trust

Te Tōtarahoe o Paerangi is the nominal name for the Ngāti Rangi Trust, our legal entity. The term tōtarahoe originates from the group of warriors that would protect the tribal interests during times of both peace and war and has been used to describe those that are responsible with moving Ngāti Rangi into the future.

Representation on Te Tōtarahoe is twofold: representation nominated from Te Kāhui o Paerangi and two independently elected positions by the iwi for uri that have an interest in helping our iwi. The Tōtarahoe structure is outlined as follows:



Governance Obligations and Support

Te Kāhui o Paerangi meets every second month on the third Sunday of that month. Te Kāhui representatives are required to report back to their marae to ensure that communication between our marae and the iwi body is maintained. At this stage representatives are only paid a small amount for their time and mileage.

Te Tōtarahoe o Paerangi meets on the second Tuesday of each month except in January. Te Tōtarahoe representatives are required to report back to their paepae (marae cluster) at least once a quarter. Tōtarahoe representatives are paid the same as Te Kāhui representatives.

Where Ngāti Rangi are represented on various private organisations, fora or working parties, those organisations are invoiced for our peoples time.

Ngāti Rangi currently has two paid positions: a project manager and database officer. These positions help to make Ngāti Rangi tick while identifying opportunities to improve the situation for our people living at home and maintaining the ahi kā of Ngāti Rangi.

Ngāti Rangi Annual Report 2009

For Te Kāhui o Paerangi (iwi rūnanga) and Te Tōtarahoe o Paerangi (Ngāti Rangi Trust)

Kaitiakitanga in Practice

Ngāti Rangi and Ngāti Uenuku – Opening of new chairlift on Tūroa ski field



From Left: Kemp Dryden, Aiden Gilbert, Rangitihi Tahupārae and Don Robinson

Te Kura Kaupapa o Ngāti Rangi taura skiing on Koro Ruapehu



From left: Te Puawai Wilson Leahy, Helena Maria Kaire, Pisivalu Tulusi